



An innovative new feature in **Lightspeed Web Access Manager** and **Total Traffic Control**

Extends policies and protection with flexible filtering when computers are off the network

When school computers leave the network, both the computers and the users can be exposed to harmful content and safety and security risks. Mobile Internet filtering ensures the safety of your users—and reduces the cost, downtime, and frustration associated with computers that have a tendency to be compromised while off the network. Whether your mobile users are part of a 1:1 initiative or just staff bringing laptops on and off the network, the Guide Mobile Filter will protect them and enforce your Acceptable Use Policies.

BENEFITS

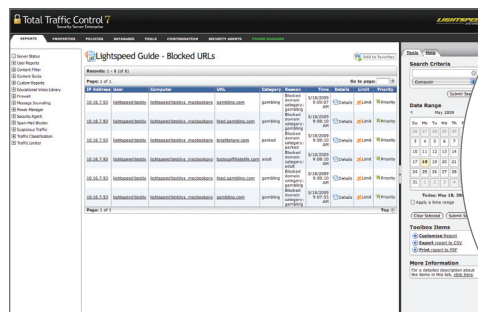
Extends policies and protection to off-network computers. Your Acceptable Use Policies protect both your users and your equipment. Laptops taken off the network are often free from the content filtering used within the network, opening users up to inappropriate content and equipment to dangerous web sites. The Guide Mobile Filter delivers flexible cross-platform support for off-network computers, ensuring that blocked sites remain blocked—no matter from where the computer is being used.

Keeps users safe with comprehensive filtering. The Guide Mobile Filter detects and/or blocks access to inappropriate material on the Internet based on our extensive, education-specific URL database, as well as your own custom allow and block lists, helping to ensure user safety and CIPA compliance.

Reduces the cost, time, and frustration of compromised computers. By blocking sites known as threats for spyware, malware, and viruses, the Guide Mobile Filter helps keep your school computers secure and safe when they are off the network, helping to keep computers clean and functioning properly.

FEATURES

- CIPA-compliant Internet filtering for mobile computers.
- Reporting of off-network activity, including Blocked URLs, Blocked URLs by Category, Unknown URLs, URLs Visited.
- Ability to block all forms of proxy servers (anonymous and secure).
- Forced SafeSearch for Google and Yahoo search engines.
- Local policy control (Active Directory and LDAP).
- Password-protected uninstall.
- Cross-platform support for Windows and Macintosh.
- Works from any location, with any type of Internet connection—without the need for a VPN.

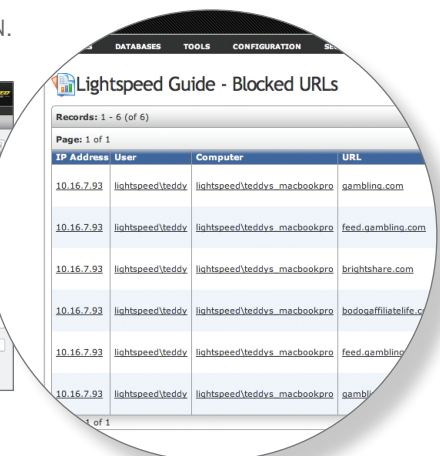


The Guide Mobile Filter provides flexible filtering for mobile users, and offers reporting on off-network Internet activity.

How the Guide Mobile Filter Works

The Guide Mobile Filter communicates Internet-browser requests from the mobile computer to a Lightspeed server at the district. In turn, the Lightspeed server references the URL requests with its content database and either allows the request to be processed or sends a blocking and redirect message to the user.

In this way Acceptable Use Policies are consistently enforced for users alternately attached to the local network and working remotely. The Guide Mobile Filter protects off-network computers from any location, with any type of Internet connection—without the need for a VPN connection.



IP Address	User	Computer	URL
10.16.7.93	lightspeed/teddy	lightspeed/teddys_macbookpro	gambli.com
10.16.7.93	lightspeed/teddy	lightspeed/teddys_macbookpro	feed.gambli.com
10.16.7.93	lightspeed/teddy	lightspeed/teddys_macbookpro	brightshare.com
10.16.7.93	lightspeed/teddy	lightspeed/teddys_macbookpro	bodogaffillatellife.com
10.16.7.93	lightspeed/teddy	lightspeed/teddys_macbookpro	feed.gambli.com
10.16.7.93	lightspeed/teddy	lightspeed/teddys_macbookpro	gambli.com

Network Solutions for Safe Online Learning

Software solutions

Manage your school network with our all-in-one solution or its components:

Lightspeed Total Traffic Control

Filter, secure, manage, and monitor with a single solution.

Lightspeed Web Access Manager

Ensure safe web browsing with customizable filtering and features for safe Web 2.0 access.

Lightspeed Email Manager

Archive and report on communications, while blocking spam.

Lightspeed Security Manager

Block viruses, spyware, and malware with desktop and gateway security.

Lightspeed Network Traffic Manager

Control traffic with bandwidth management.

Lightspeed Power Manager

Manage energy use with automated power management.

High-capacity network solutions

High-performance, scalable appliance-based school network solutions:



Lightspeed Rocket Web Access Manager

Ensure safe web browsing on your high-capacity network with comprehensive, customizable filtering and features for safe Web 2.0 access.

Lightspeed Rocket Email Manager

Efficiently block spam on your high-capacity network, while archiving and reporting on communications.

Customize your high-capacity network solution with the addition of our other software products.

Get a comprehensive, cost-saving solution for your high-capacity network by combining the two Rocket appliances with Security Manager, Network Traffic Manager, and Power Manager.

About Lightspeed Systems

Lightspeed Systems Inc., founded in 2000, develops comprehensive network security and management solutions for the education market. We are committed to helping schools operate their networks effectively and efficiently, so educators can provide safe online teaching and learning environments.

Exceptional Service and Support

Our unparalleled service and support mean our solutions will continue to deliver, long after their easy implementation. With any Lightspeed Systems solution, you can depend on:

- 24/7 live-person phone technical support.
- Comprehensive online knowledge bases.
- The Lightspeed Wiki, rife with user collaboration and product expertise.

Professional Development & Training

Professional Services: We provide customized, collaborative professional development services to address your specific needs. For more information, please contact ps@lightspeedsystems.com

Training: To help you fully leverage your investment in Lightspeed Systems solutions, we offer an array of training options.

- Online introductory training and user demonstration videos.
- Administrator certification.
- Regional training throughout the U.S.

Contact Us

Learn more about our products and services at www.lightspeedsystems.com

We Welcome Your Calls and Emails

Lightspeed Systems
1800 19th St., Bakersfield, CA 93301

Main: 877.447.6244

Support: 800.444.9267

Sales: sales@lightspeedsystems.com

Support: <http://wiki.lightspeedsystems.com>



See the powerful reporting, policy creation, and customization features of Total Traffic Control, and our component solutions, for yourself. Schedule an online demonstration: www.lightspeedsystems.com/demo