

## FEATURES

- **Comprehensive virus, spyware, and malware database** with automatic updates.
- **Network address translation** to (optionally) translate network IP addresses to mask the internal network structure from the outside world.
- **Application-level proxies** for many protocols, including HTTP, FTP, and SMTP give you the ability to allow or deny specific commands within these protocols at the gateway level.
- **Polymorphic virus support** to protect against complex, changing viruses.
- **Scan-on-close and network file protection** to protect against the threat of a file being “dropped” on the machine over the network via a network share path.
- **User resolution/reporting.**
- **Software/hardware inventoring.**
- **Removable media protection** (read/write/execute).
- **Banned programs.**
- **Blocked application categories.**
- **Support** for 32-bit and 64-bit versions of Windows XP, Windows Vista, Windows 7, Windows Server 2003, and Windows Server 2008; and Mac OS systems 10.4.x and newer.

# Block viruses, spyware, and malware with desktop and gateway security

Potential threats lurking inside and outside your network can compromise safety, expose systems to harm, and lead to costly and time-consuming problems and outages. While anti-virus software can reduce exposure to known threats, unknown threats remain unblocked.

**Lightspeed Security Manager** allows you to easily maintain the health of computers across your network by stopping known and unknown threats to your servers and desktops. Security Manager protects your valuable network resources from unwanted access with its advanced, stateful inspection of network traffic.

## BENEFITS

**Blocks known threats.** Lightspeed Systems maintains a comprehensive database of virus, spyware, and malware signatures—and distributes signature updates to you every day, and emergency updates immediately. For deeper, more intrusive infections, Security Manager can be used to disinfect severely infected machines and return them to a pre-infection state.

**Blocks unknown threats.** To block spyware and unknown threats, Security Manager provides proactive protection with application integrity checking and registry monitoring, so you can stop potential threats before they do real damage.

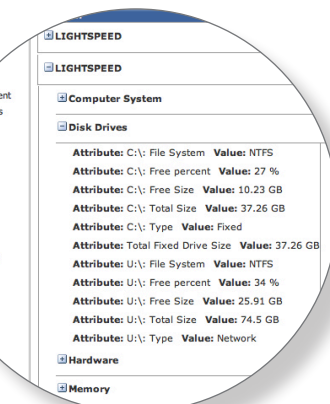
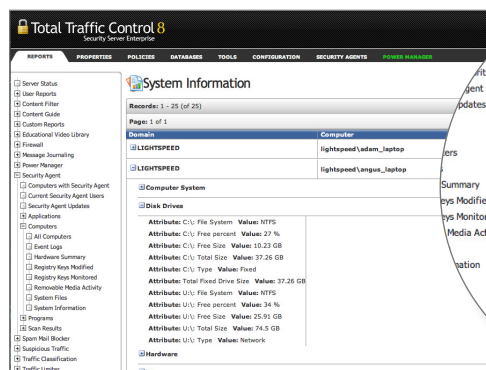
**Inventories desktop software.** Security Manager lets you know exactly what software is deployed where, so you can manage computers across the network and save on software license renewals.

**Monitors and regulates inbound and outbound traffic.** Security Manager actively inspects both inbound and outbound network traffic to determine, based on the configured security policies, whether or not the traffic is allowed.

## Comprehensive, Customizable Reporting

Security Manager gives you access to comprehensive information about potentially dangerous applications, files, and users on your network, so you can adjust user privileges, review problems and troubleshoot issues, and plan for ongoing needs. You can see a high-level overview of your network security, and then drill down for detailed information, with reports like:

- Hardware/Software Inventory
- Unknown Programs
- Computers with Security Agent
- Blocked Programs
- Blocked Viruses



## Network Solutions for Safe Online Learning

### Software solutions

Manage your school network with our all-in-one solution or its components:



### Lightspeed Total Traffic Control

Filter, secure, manage, and monitor with a single solution.



### Lightspeed Web Access Manager

Ensure safe web browsing with customizable filtering and features for safe Web 2.0 access.



### Lightspeed Email Manager

Archive and report on communications, while blocking spam.



### Lightspeed Security Manager

Block viruses, spyware, and malware with desktop and gateway security.



### Lightspeed Network Traffic Manager

Control traffic with bandwidth management.



### Lightspeed Power Manager

Manage energy use with automated power management.

### High-capacity network solutions

High-performance, scalable appliance-based school network solutions:



### Lightspeed Rocket Web Access Manager

Ensure safe web browsing on your high-capacity network with comprehensive, customizable filtering and features for safe Web 2.0 access.

### Lightspeed Rocket Email Manager

Efficiently block spam on your high-capacity network, while archiving and reporting on communications.

Customize your high-capacity network solution with the addition of our other software products.

Get a comprehensive, cost-saving solution for your high-capacity network by combining the two Rocket appliances with Security Manager, Network Traffic Manager, and Power Manager.

### About Lightspeed Systems

Lightspeed Systems Inc., founded in 1999, develops comprehensive network security and management solutions for the education market. We are committed to helping schools operate their networks effectively and efficiently, so educators can provide safe online teaching and learning environments.

### Exceptional Service and Support

Our unparalleled service and support mean our solutions will continue to deliver, long after their easy implementation. With any Lightspeed Systems solution, you can depend on:

- 24/7 live-person phone technical support.
- Comprehensive online knowledge bases.
- The Lightspeed Wiki, rife with user collaboration and product expertise.

### Professional Development & Training

**Professional Development:** We provide customized, collaborative professional development services to address your specific needs. For more information, please contact [pd@lightspeedsystems.com](mailto:pd@lightspeedsystems.com)

**Training:** To help you fully leverage your investment in Lightspeed Systems solutions, we offer an array of training options. For more information, please contact [training@lightspeedsystems.com](mailto:training@lightspeedsystems.com).

- Online introductory training and user demonstration videos.
- Administrator certification.
- Regional training throughout the U.S.

### Contact Us

Learn more about our products and services at [www.lightspeedsystems.com](http://www.lightspeedsystems.com)

### We Welcome Your Calls and Emails

Lightspeed Systems  
1800 19<sup>th</sup> St., Bakersfield, CA 93301

Main: 877.447.6244

Support: 800.444.9267

Sales: [sales@lightspeedsystems.com](mailto:sales@lightspeedsystems.com)

Support: <http://wiki.lightspeedsystems.com>



See the powerful reporting, policy creation, and customization features of Total Traffic Control, and our component solutions, for yourself. Schedule an online demonstration: [www.lightspeedsystems.com/demo](http://www.lightspeedsystems.com/demo)