

Spam Filter

Block time-consuming, resource-draining and virus-laden spam

Spam management is one of the most important lines of defense against viruses and inappropriate content. Email abuse can degrade your network performance and waste the time of both IT staff and users. The Lightspeed Spam Filter helps you ensure that your email system is being securely and appropriately used, without hindering the ability to work and communicate. You can ensure that messages users want are getting through with end-user spam summaries and customizable allow lists.

With the **Lightspeed Spam Filter**, you can:

- Secure your network** against malware, viruses, and spyware.
- Increase user productivity** by blocking time-draining spam.
- Offset IT burden** by shifting control to end users with daily email summaries.
- Reduce exposure** to harmful or offensive content.
- Improve bandwidth** by applying message file size limitations.
- Enforce Acceptable Use Policies** on email usage without hindering communication.

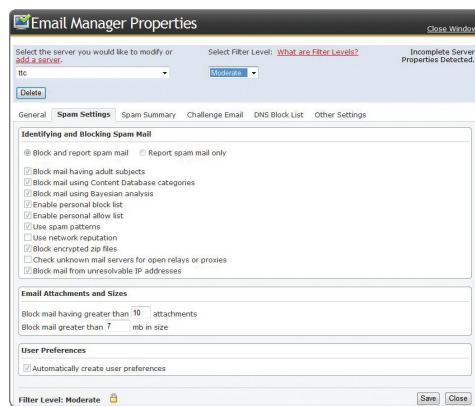
FEATURES

- More than fourteen proven lines of defense for blocking spam.
- Allow and block lists of email addresses, both global and local.
- Challenge emails to verify unknown email addresses.
- Adult subject-line scanning and filtering.
- Email content filtering to block inappropriate content and email viruses.
- Bayesian statistical analysis to evaluate message content.
- Review of unknown mail servers to detect open relays or proxies.
- Ability to remove offensive content from users' email summary reports.
- Customizable database of content categories to be blocked.
- Flexible filtering levels: mild, moderate, aggressive, custom.
- Ability to supervise personal allow lists and delivery requests.
- Ability to block messages based on attachment file size or number.
- Ability to block specified extensions on received files.

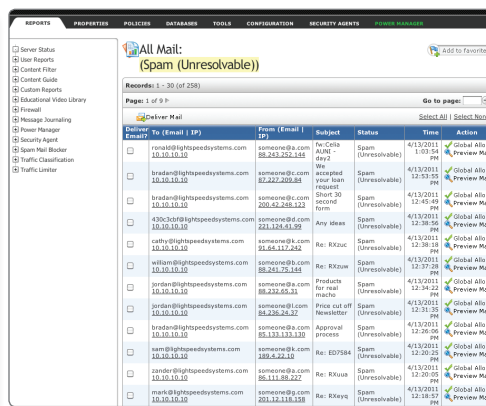


“Now those spam emails are blocked, and users get daily mail summaries they can review to make sure they’re getting the emails they want, but not receiving the ones they don’t. It has been a huge time-saver for teachers, and for me.”

— Gary Kohl,
Technology Coordinator,
Ladysmith School District



Easily manage your spam filtering settings with flexible policies.



View details of **Unresolvable Spam** messages to determine whether to add to the Allow list.

Spam Filter



Comprehensive, Customizable Reporting

The Lightspeed Spam Filter provides comprehensive information about messages, email viruses, and spam, so you can adjust policies, review problems and troubleshoot issues, plan for ongoing needs, and easily manage email to block spam but allow wanted messages. You can see a high-level overview of emails, and drill down for detailed information with reports like:

- All Mail, Clean Mail, and Spam Mail Summaries
- Overblocked Mail
- Underblocked Mail
- Mail Traffic Chart
- Virus Mail
- Spam Mail
- Challenge Emails
- Supervise Spam

The screenshot shows a web interface with a navigation menu on the left and a main content area. The main content area displays a report titled "Spam Mail Only: (Spam (Realtime Spam Checker) Challenge email failed)". Below the title, there is a table with columns: Deliver Email?, To (Email | IP), From (Email | IP), Subject, Status, Time, and Action. The table contains three rows of data.

Deliver Email?	To (Email IP)	From (Email IP)	Subject	Status	Time	Action
<input type="checkbox"/>	bradan@lightspeedsystems.com 10.10.10.10	someone@e.com 205.207.146.31	Delayed Mail (still being retried)	Spam (Realtime Spam Checker) Challenge email failed ==== blank, no reply, or invalid email from: address	4/13/2011 12:49:22 PM	Global Allow Preview Mail
<input type="checkbox"/>	cathy@lightspeedsystems.com 10.10.10.10	someone@u.com 132.192.6.144	Undelivered Mail Returned to Sender	Spam (Realtime Spam Checker) Challenge email failed ==== blank, no reply, or invalid email from: address	4/13/2011 11:26:21 AM	Global Allow Preview Mail
<input type="checkbox"/>	gordon@lightspeedsystems.com 10.10.10.10	someone@l.com 125.23.31.123	Fast association	Spam (Realtime Spam Checker) Challenge email failed ==== from: and to:	4/13/2011 10:23:20 AM	Global Allow Preview Mail

View **Challenged Emails that Failed** to decide whether to block or allow.

"I like the ease and flexibility of the Spam Filter. I like that it blocks the unwanted messages before they get to our Exchange Servers so I didn't need to increase the CPU or storage on the email servers to block and archive the spam messages."

— James Hanrahan,
Systems Support Specialist,
Kenosha USD

The Lightspeed Suite

Choose an all-in-one solution, or customize it to your needs:

- Web Filter
- Mobile Filter
- My Big Campus
- Hosted Email
- Educational Resource Library
- Hosted District Web Site
- Campus Collaboration Bundle
- Email Archiving
- Antivirus
- Spam Filter
- Advanced Web Traffic Reporting
- Power Management

About Lightspeed Systems

Since 1999, Lightspeed Systems has been partnering with IT staff in schools—making day-to-day tasks manageable and educational goals reachable. Today, our solutions are used in more than 2,000 school districts, allowing us to help transform education.

To learn more about our products and services:
www.lightspeedsystems.com

Main: 877.447.6244

Support: 800.444.9267

Sales: sales@lightspeedsystems.com

Support: <http://wiki.lightspeedsystems.com>



Lightspeed Spam Filter is available on a Rocket appliance.

Lightspeed Rocket

As a single solution or combined with other products in the Lightspeed Suite, Spam Filter is delivered on a powerful Rocket Appliance with an advance replacement three-year warranty.



See it for yourself!

Schedule a one-on-one personalized demonstration:
www.lightspeedsystems.com/demo



Empowering IT | Transforming Education